

Funding for Land Trusts and the Tools to Find it

Webinar for WeConservePA

October 10, 2024

Presenters:

- **Mary Pfaffko**, Director, Private Lands Program, Defenders of Wildlife
- **Ben Alexandro**, Director, Chesapeake Conservation Partnership / Chesapeake Conservancy
- **Dr. Faren R. Wolter**, Conservation Social Scientist & Chesapeake WILD Program Coordinator, US Fish and Wildlife Service
- **Suzy Yetter**, Ecologist, ClearWater Conservancy



Agenda

- WALT: Wildlife and Land Trusts (Mary Pfaffko)
- Federal Funding Navigator (Ben Alexandro)
- Chesapeake WILD grant program (Dr. Faren Wolter)
- Case study: ClearWater Conservancy winning and administering a WILD grant (Suzy Yetter)
- Q&A





WALT

Wildlife and Land Trusts

A tool for land trusts to identify federal resources to conserve wildlife



<https://dfnd.us/walt>

Mary Pfaffko
mpfaffko@defenders.org





Federal Funding Navigator

Ben Alexandro, CCP Program Director

WeConservePA Webinar

October 10th 2024

A background of falling 100 dollar bills, scattered across the entire frame. The bills are in various orientations, some falling straight down, others curved as if caught in a breeze. The bills are green and white, with the number '100' clearly visible on many of them. The overall effect is one of money falling from the sky.

Once-in-a-generation federal sources of funds for land conservation



Focus on programs that are:

- New
- Significant new funding
- Requested by partners
- Fund permanent land conservation



Criteria

- Potential for Land Conservation
- Application Difficulty
- Administration Requirements
- Relative Competitiveness
- Funding in Chesapeake Watershed
- Special Criteria/Nexus for Funding



Components

- Snapshot
- Web app
- Deep dive
 - Basic program information
 - Grant information
 - Assessment
- Early alert system

Assessment Snapshot

Program	Agency	Potential for Land Conservation	Application Difficulty	Grant Administration Requirements	Relative Competitiveness	Funding in Chesapeake Bay to Date?	Special Criteria/Nexus for Funding
Agricultural Conservation Easement Program (ACEP)	NRCS	High	Moderate	High	Unknown	Low for IRA funding pool	Agricultural and wetlands that meet program priorities.
America the Beautiful Challenge (ATBC)	NFWF	Moderate	Moderate	Moderate	High	Low	On-the-ground cross-jurisdictional, landscape-scale restoration
Building Resilient Infrastructure and Communities (BRIC)	FEMA	High	High	High	High	Moderate	Measurable disaster risk reduction benefit
Chesapeake Gateways and Watertrails Program	National Park Service, Chesapeake Office	Low	Moderate	Moderate	High	High	Inclusive interpretation and equity, and/or resilient communities and landscapes through tourism, sustainability, conservation & local economies
Chesapeake WILD	FWS/NFWF	High	Moderate	Low	Moderate	High	Fish & wildlife habitat benefits



Disclaimer:

The Chesapeake
Conservation Partnership
Federal Funding Navigator
does **NOT** say one grant is
better than another

This is navigator tool, **not** a rating system

All federal grants:

Are intensive

Require significant capacity

Are competitive

Vary in how heavy of a lift

Federal Funding Navigator tool (early access)



<https://www.chesapeakeconservation.org/>

-> Resources -> Tools -> Federal Funding Navigator

<https://cicapps.org/ffn/>

- **Password: FFN!**

Federal Funding Programs

Explore various funding opportunities

Filter and Sort

Search

Sort by

Program (A to Z)

Agricultural Conservation Easement Program (ACEP)

Agency: NRCS

Special Criteria/Nexus for Funding: Agricultural and wetlands that meet program priorities.

Potential for Land Conservation: High

Application Difficulty: Moderate

Grant Administration Requirements: High

Relative Competitiveness: Unknown

Funding in Chesapeake Bay to Date: Low for IRA funding pool

Program Website



America the Beautiful Challenge (ATBC)

Agency: NFWF

Special Criteria/Nexus for Funding: On-the-ground cross-jurisdictional, landscape-scale restoration

Potential for Land Conservation: Moderate

Application Difficulty: Moderate

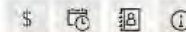
Grant Administration Requirements: Moderate

Relative Competitiveness: High

Funding in Chesapeake Bay to Date: Low

Rachel M. Dawson (she/her) Program Director | National Programs Rachel.Dawson@nfwf.org

Program Website



Building Resilient Infrastructure and Communities (BRIC)

Agency: FEMA

Special Criteria/Nexus for Funding: Measurable disaster risk reduction benefit

Potential for Land Conservation: High

Application Difficulty: High

Grant Administration Requirements: High

Relative Competitiveness: High

Funding in Chesapeake Bay to Date: Moderate

Program Website



Chesapeake Gateways and Watertrails Program

Agency: National Park Service, Chesapeake Office

Special Criteria/Nexus for Funding: Inclusive interpretation and equity, and/or resilient communities and landscapes through tourism, sustainability, conservation & local economies

Potential for Land Conservation: Low

Chesapeake WILD

Agency: FWS/NFWF

Special Criteria/Nexus for Funding: Fish & wildlife habitat benefits

Potential for Land Conservation: High

Environmental and Climate Justice Community Change Grants Program

Agency: EPA

Special Criteria/Nexus for Funding: Must benefit a disadvantaged community or communities; must increase community resilience to climate change and have pollution reduction benefits

Potential for Land Conservation: Low

Federal Funding Programs

Explore various funding opportunities

Filter and Sort

Search

Sort by

- ✓ Program (A to Z)
- Agency (A to Z)**
- Potential for Land Conservation (High to Low)
- Application Difficulty (Low to High)
- Grant Administration Requirements (Low to High)
- Relative Competitiveness (Low to High)
- Funding in Chesapeake Bay to Date (High to Low)

<p>Potential for Land Conservation: High</p> <p>Application Difficulty: Moderate</p> <p>Grant Administration Requirements: High</p> <p>Relative Competitiveness: Unknown</p> <p>Funding in Chesapeake Bay to Date: Low for IRA funding pool</p> <p>Program Website </p> <p> </p>	<p>Potential for Land Conservation: Moderate</p> <p>Application Difficulty: Moderate</p> <p>Grant Administration Requirements: Moderate</p> <p>Relative Competitiveness: High</p> <p>Funding in Chesapeake Bay to Date: Low</p> <p>Program Website </p> <p> </p>	<p>Potential for Land Conservation: High</p> <p>Application Difficulty: High</p> <p>Grant Administration Requirements: High</p> <p>Relative Competitiveness: High</p> <p>Funding in Chesapeake Bay to Date: Moderate</p> <p>Program Website </p> <p> </p>
---	---	--

Chesapeake Gateways and Watertrails Program

Agency: National Park Service, Chesapeake Office
Special Criteria/Nexus for Funding: Inclusive interpretation and equity, and/or resilient communities and landscapes through tourism, sustainability, conservation & local economies

Potential for Land Conservation: Low

Chesapeake WILD

Agency: FWS/NFWF
Special Criteria/Nexus for Funding: Fish & wildlife habitat benefits

Potential for Land Conservation: High

Environmental and Climate Justice Community Change Grants Program

Agency: EPA
Special Criteria/Nexus for Funding: Must benefit a disadvantaged community or communities; must increase community resilience to climate change and have pollution reduction benefits

Potential for Land Conservation: Low

Program Details

**America the Beautiful Challenge (ATBC)****Agency:** NFWF**Special Criteria/Nexus for Funding:** On-the-ground cross-jurisdictional, landscape-scale restoration**Full Assessment****Potential for Land Conservation:** Moderate

Land acquisition and/or easements are eligible expenses but only for grant categories 1 and 3 and to be competitive should be in service of a broader landscape restoration goal, e.g., protecting land within a high-priority migration corridor in order to improve the corridor.

Application Difficulty: Moderate

Moderate - but variable depending on grant category (e.g., DOD proposals must have engaged with and have letters from the installation leadership).

Grant Administration Requirements: Moderate

Standard NFWF annual programmatic and financial reporting and final report.

Relative Competitiveness: High

Competitive but previous total numbers of applications unknown.

Funding in Chesapeake Bay to Date: Low

ATBC presents an opportunity for land conservation that is landscape-scale and can deliver progress towards existing conservation, restoration, and species recovery plans. Further, its administration through NFWF simplifies the application and grant administration process for applicants. ATBC is a program administered by NFWF to consolidate and deploy IJA funding for restoration activities from multiple federal agencies together with private sector funding by simplifying the application and grant administration process. ATBC prioritizes proposals that will implement or build implementation capacity across partners for on-the-ground cross-jurisdictional, landscape-scale restoration, with the goal of advancing existing landscape conservation and restoration, species recovery, and/or restoration plans. Applicants must choose one of five grant categories to apply to; while all focused on landscape-scale conservation/restoration, the five grant categories have differing focal areas and eligibility and application requirements. In general, successful proposals reflect either implementation or capacity-building towards implementation of large-scale conservation and restoration focused on specific species, habitats, and/or ecosystem functions and services at the landscape or watershed scale. Importantly, land acquisition and/or easements are eligible expenses but only for grant categories 1 and 3 and to be competitive should be in service of a broader landscape restoration goal, e.g., protecting land within a high-priority migration corridor in order to improve the corridor. There was extremely limited funding in the FY23 grant slate.

See even more in the Google Sheet



Looking Ahead

Potential additions

- Calander?
- Mapping funding programs?

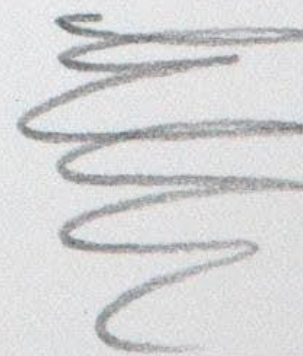
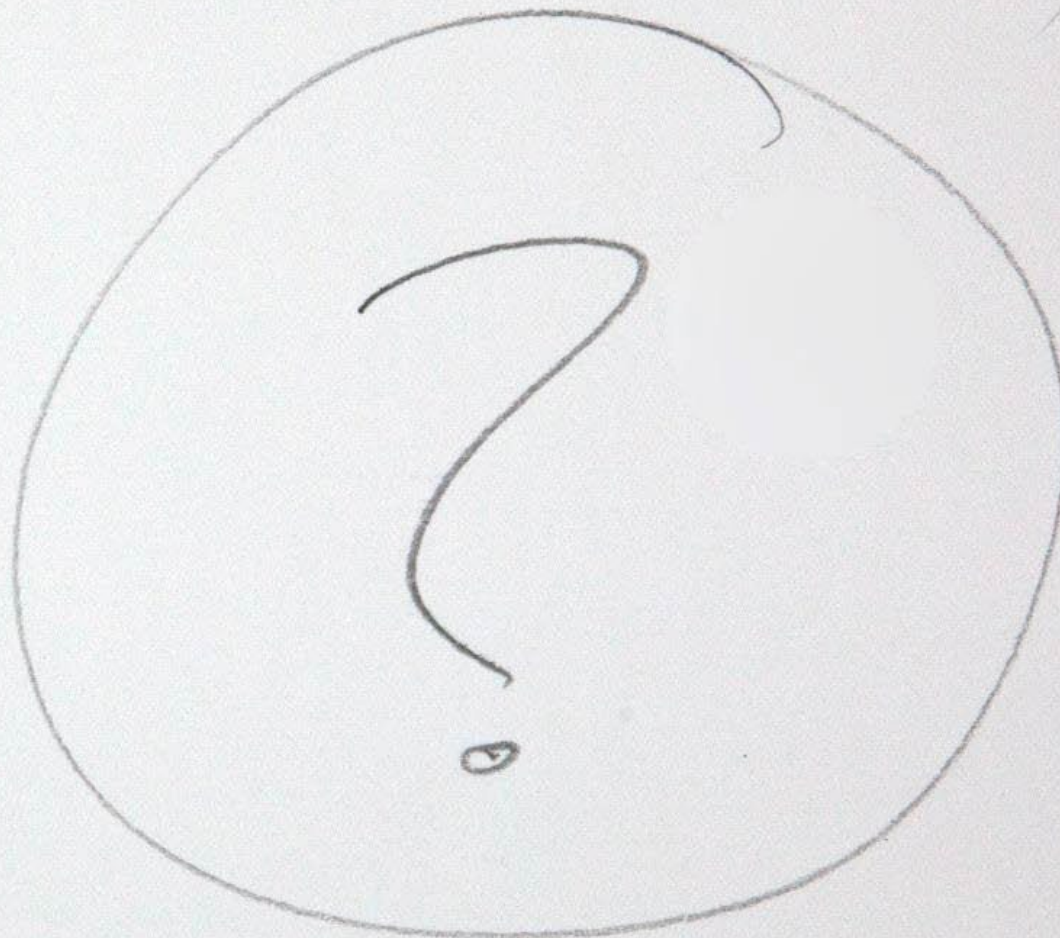
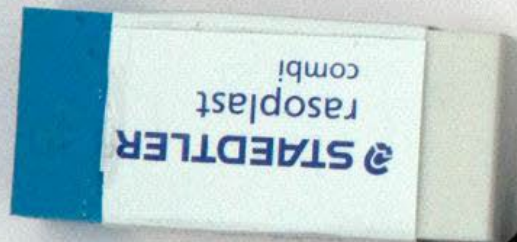


ENVIRONMENTAL POLICY
INNOVATION
CENTER

Thanks to support from:



Thoughts and Discussion



Ben Alexandro
CCP Program Director
Chesapeake Conservancy

balexandro@chesapeakeconservation.org

Chesapeake Watershed Investments for Landscape Defense (WILD) Program

Funding for Land Trusts and the Tools to Find It Webinar
10 Oct 2024

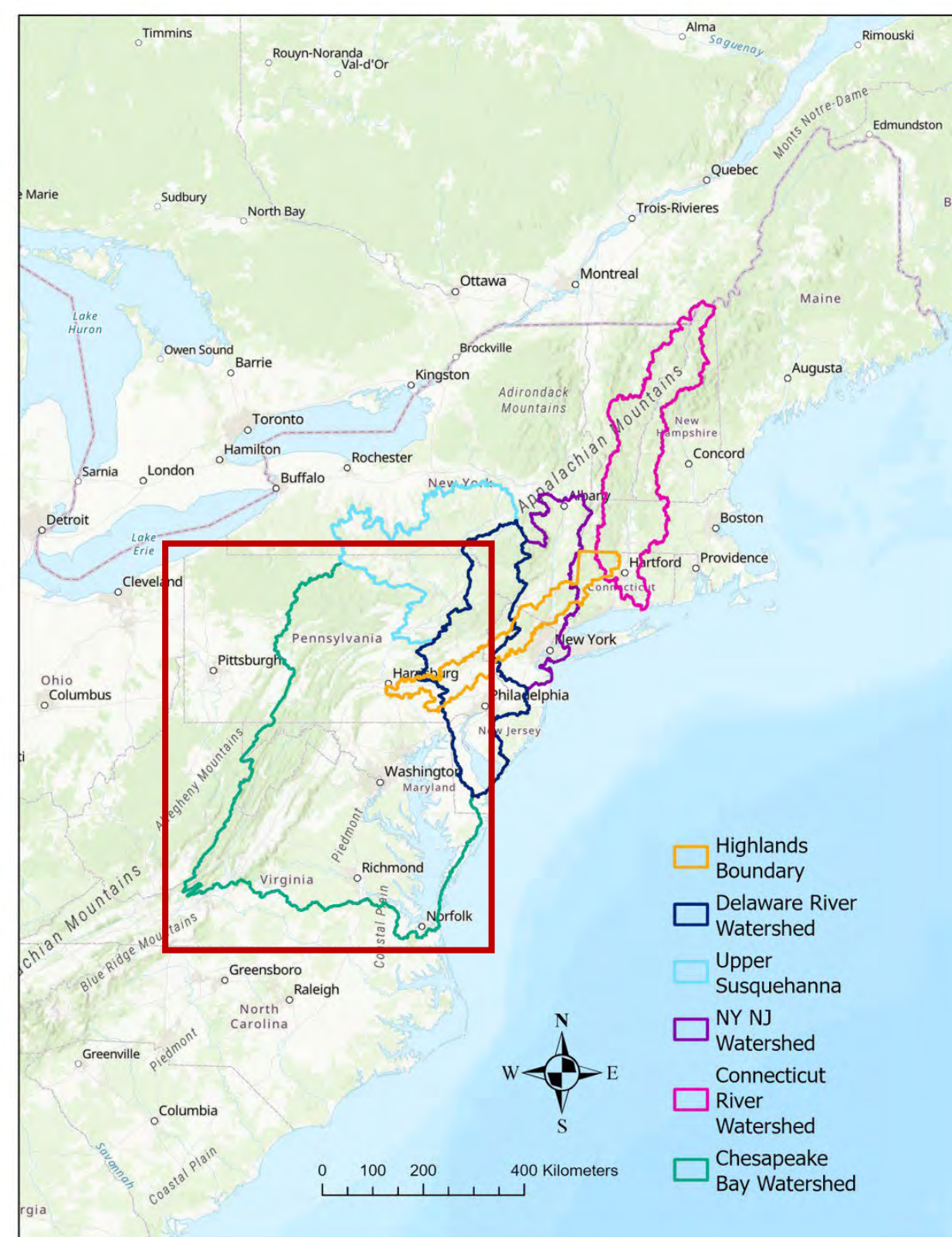




USFWS Science Applications (R5/NE): Landscape Branch

Landscape-Scale Conservation Design and Delivery

Achieving fish and wildlife habitat outcomes *and* connecting people with nature through multi-scale regional partnerships

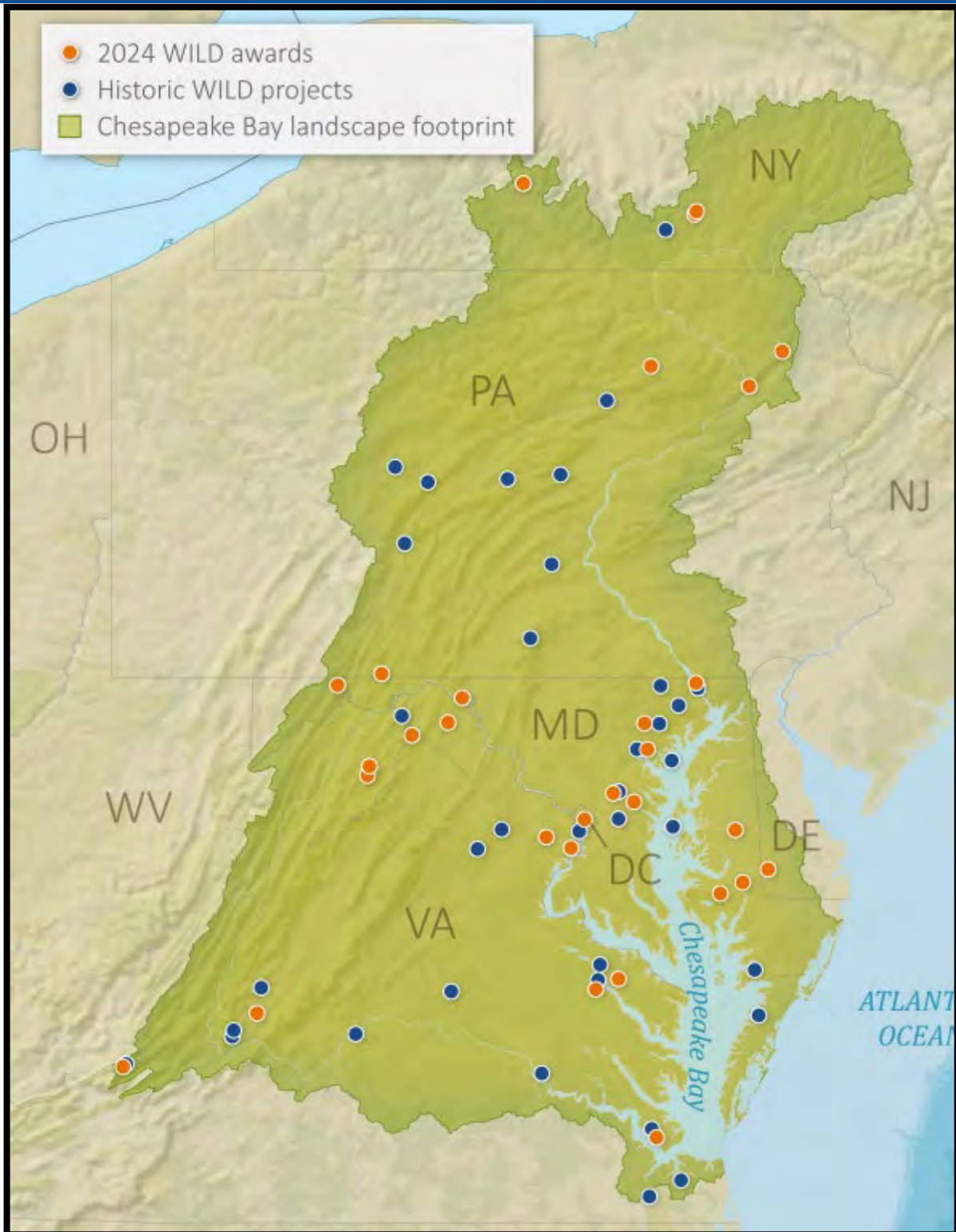


Chesapeake WILD Program Pillars



All reported data subject to change

Pillar buttons are original artwork by Sophia Seufert, USFWS



Chesapeake WILD Grants



Technical assistance + communications and outreach = competitive proposals

- **66 awards (\$19.7M + \$28.6M in match) → \$48.3M total investment!**
- Projects will **restore habitat and conserve species**, **improve water quality**, enhance climate resilience and readiness, **equitably connect people with nature**, and provide many other benefits to surrounding communities.
- **~80% of WILD projects** are doing conservation work in places with **more diversity, higher poverty and unemployment**, and **lower household income** than the national average!
- **Diversity of priority-aligned projects in both funding tracks**
- **Diversity of applicants & geographic spread**

All reported data subject to change

Chesapeake WILD Grants Impact: Ecological

- Permanently protect critical forest, wetland, pollinator, and marsh habitats: **18,674ac**
- Restore riparian forest and wetland habitats: **1,000ac**
- Improve river and trail recreational access: **~31mi**
- Aquatic connectivity/river opened for migratory species: **1,735mi**
- Trees planted: **>97K**
- **Nature-based solutions** for stormwater & erosion management

All reported data subject to change





Chesapeake WILD Grants

Impact: Ecological

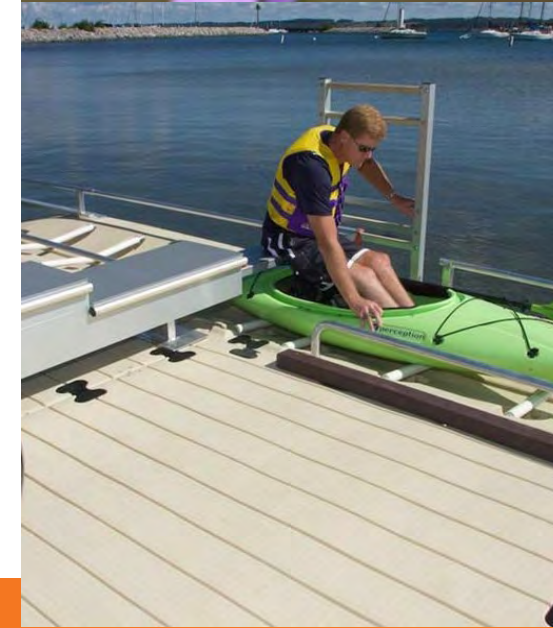


- Federal At-risk & State Species of Greatest Conservation Need listed species focus
- Science and data gaps
- Actions led by Indigenous and people of color
- Cross-jurisdictional management & capacity building

Chesapeake WILD Grants Impact: Connecting People with Nature

- **Community led** and **managed greenspaces** and **pollinator habitat**
- **Restore cultural connections** and **sacred relationships** between **Indigenous people, fish** and **wildlife, and their ancestral lands**
- **Faith-based** and **injustice-led conservation actions**
- **Equitable access to nature and recreation**

All reported data subject to change



FY25 Grant Cycle



CHESAPEAKE



WILD emblem credit: Sophia Seufert, USFWS

Grant Tracks and Eligibility



	WILD Implementation	WILD-PTA
Project Award Range	\$75,000 – 750,000	Up to \$75,000
Match Requirement	1:1*	Encouraged, but not required

• Up to 50% of Implementation grants match requirement may be met through federal match from NON-Department of Interior sources.

Organization Type	WILD Implementation	WILD-PTA
501(C) non-profit organizations	✓	✓
Community based organizations	✓	✓
Local Governments	✓	✓
Municipal governments	✓	✓
Tribal governments and organizations	✓	✓
K-12 educational institutions	✓	✓
U.S. Federal Government agencies	✓	✓
State Government Agencies	✓	✓
Institutions of higher education	✓	✓
Businesses	✗	✗
Unincorporated Individuals	✗	✗
International Organizations	✗	✗



Chesapeake WILD FY25 RFP (\$TBD)

- RFP release: late Jan
- NFWF Applicant Webinar: Feb/March
- NFWF FieldDoc Webinar: Feb/March
- Proposal Due Date: early April
- Proposal Review Period: Apr – Aug
- Awards Announced: ~Sept
- Funds released: ~Oct (start new FY)

FY25 Chesapeake WILD Grants RFP and webinar registration and links will be posted here: [Chesapeake WILD | NFWF](#)



Technical Assistance

Technical assistance + communications and outreach = competitive proposals

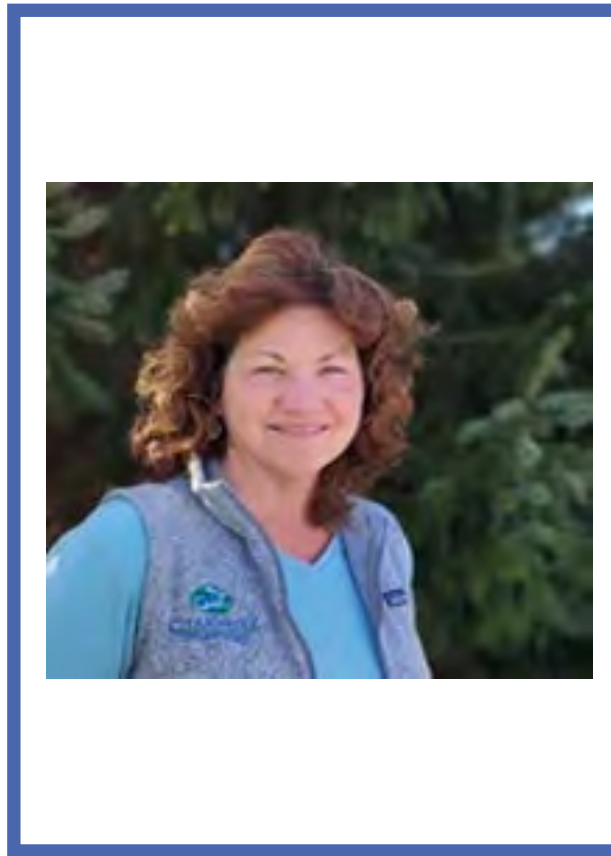
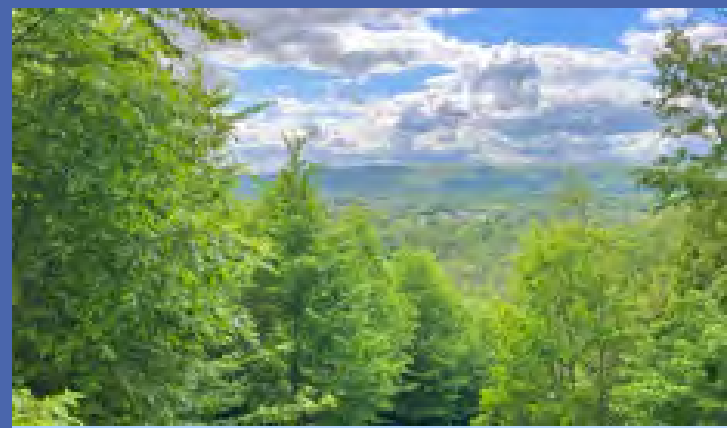
- WILD Proposal Labs (Feb – Mar)
- Webinars (Feb/Mar and TBD)
- NFWF Field Liaisons (year-round)
- One-on-one consultations with USFWS or NFWF (year-round)



Questions?

Faren R. Wolter, Ph.D.
Chesapeake WILD Program Coordinator
& Conservation Social Scientist
USFWS, Science Applications
Chesapeake Bay Field Office
Faren_wolter@fws.gov





Federal Funding and the Tools to Find It

WeConserve PA Webinar

October 10, 2024

Suzy Yetter

Ecologist, *ClearWater Conservancy*

Email: suzy@clearwaterconservancy.org

Phone: 814-237-0400

Synopsis

- Background (CWC and Joel's Woods)
- Project components and alignment with WILD framework
- Funding
- Challenges





ClearWater Conservancy is a locally-formed, nationally-accredited land trust serving central Pennsylvania since 1980

Our mission is to conserve and restore our natural resources through land conservation, water resources stewardship, and environmental outreach across central Pennsylvania






Permanently Conserving Forest Habitats
and Wildlife in Centre County (PA)



CLEARWATER
conservancy

***Egg Hill Properties
Spring Mills, Gregg Twp.
Centre County,
Pennsylvania***

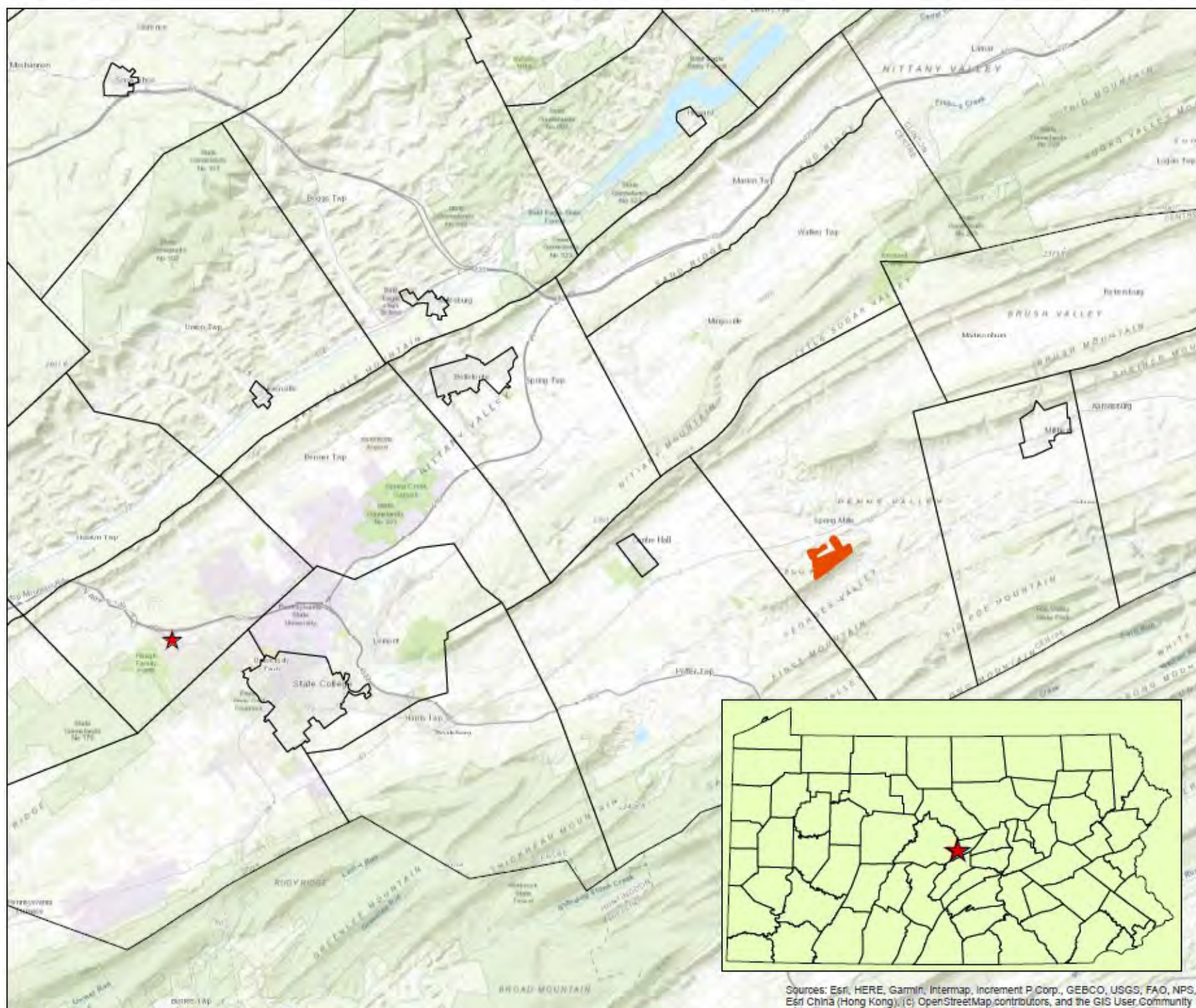
-  Project Area
-  ClearWater Conservancy's Office
-  Centre County Municipal Boundaries



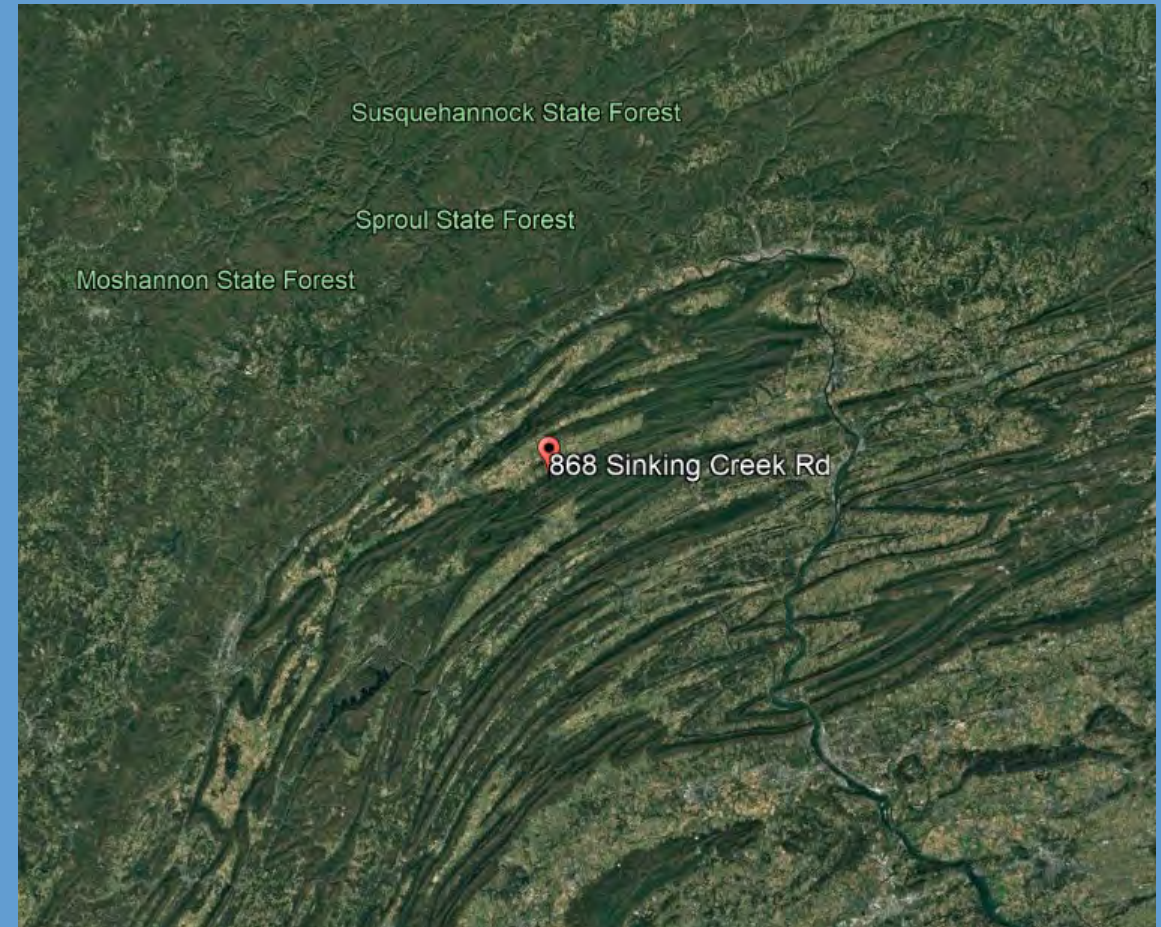
0 4 8

Miles
1:160,000

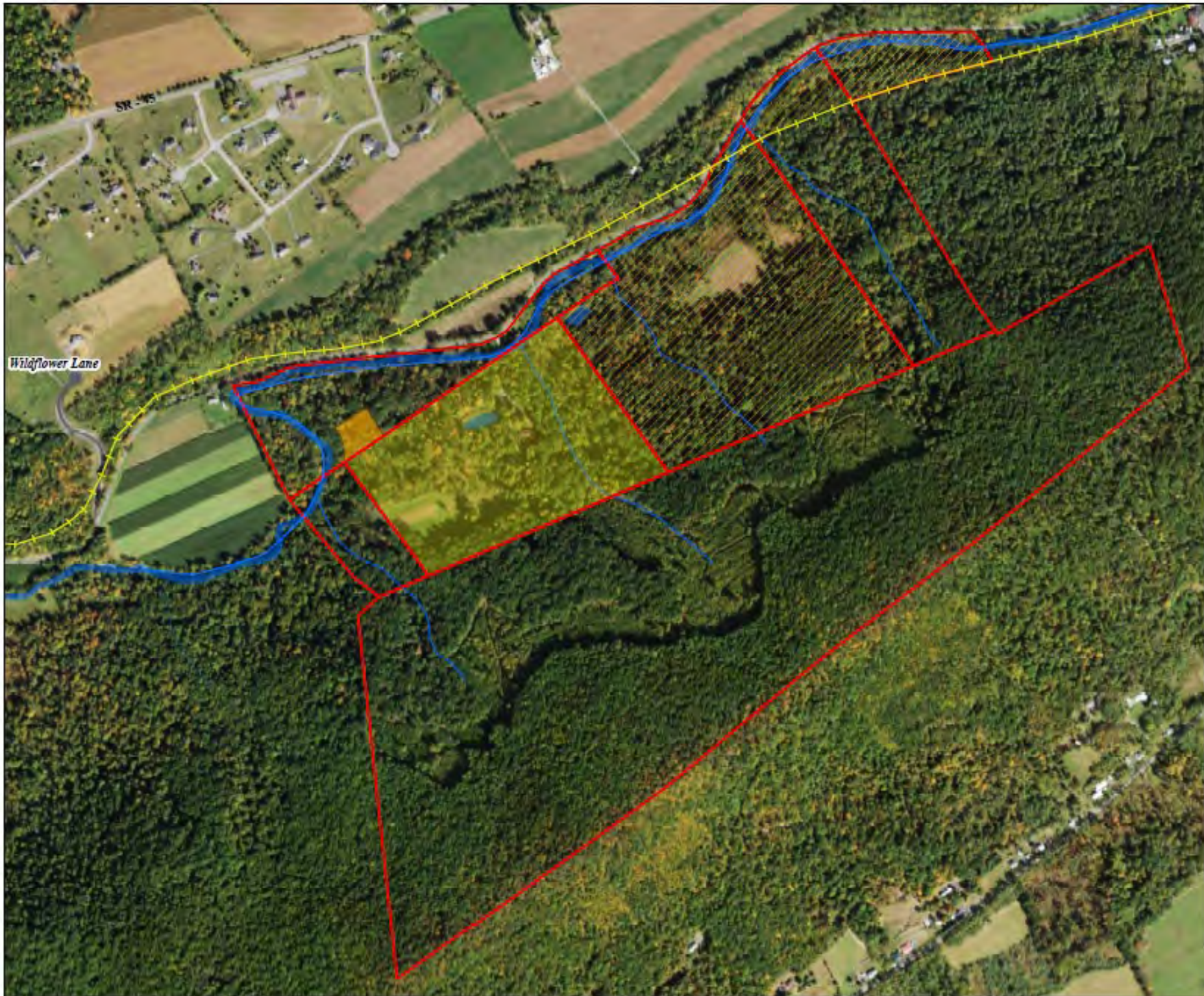
Created by: ClearWater Conservancy
April 2023 - JAB
Data Sources: Centre County Planning & Community
Development, PA-DCNR
Aerial Imagery: NGS / USGS / ESRI



Sources: Esri, HERE, Garmin, Intermap, Increment P Corp., GEBCO, USGS, FAO, NPS, NRCAN, GeoBase, IGN, Kadaster NL, Ordnance Survey, Esri Japan, METI, Esri China (Hong Kong), (c) OpenStreetMap contributors, and the GIS User Community



Joel's Woods Conservation Easement
—Egg Hill

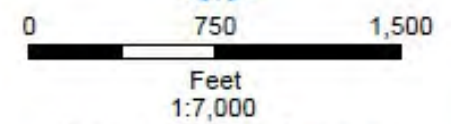


CLEARWATER conservancy

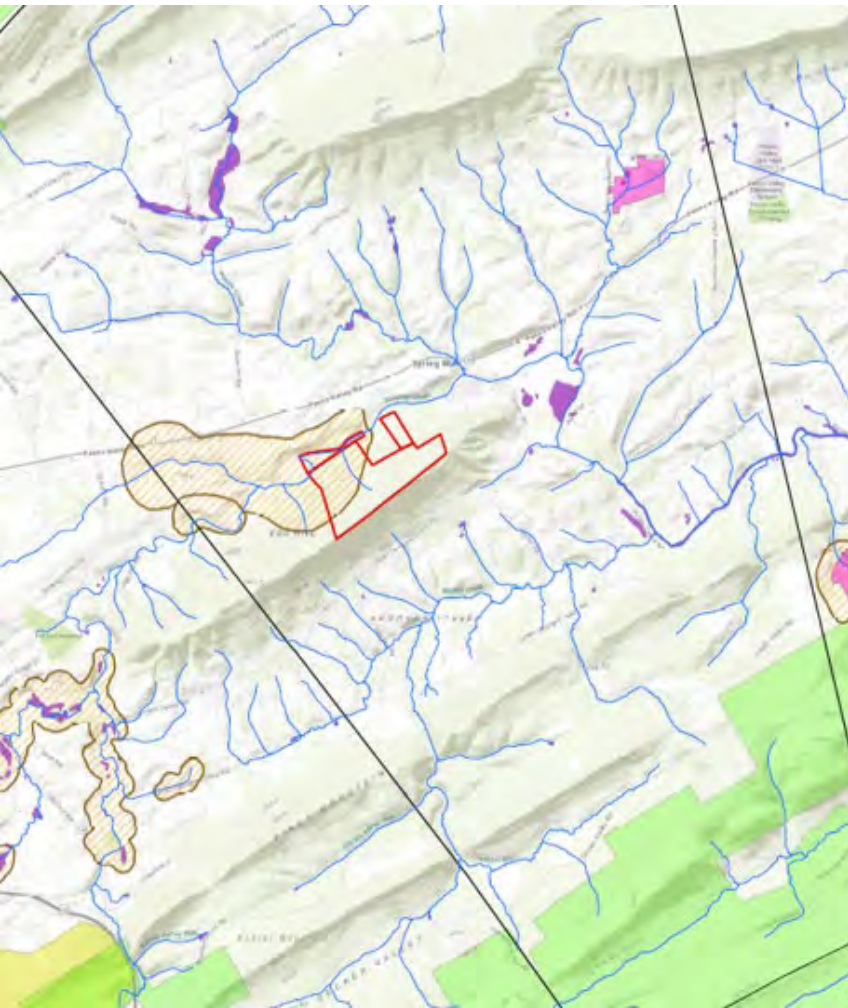
Egg Hill Easement Plan Spring Mills, Gregg Twp. Centre County, Pennsylvania

-  Future L&T Community-Based Trail
-  Streams
-  Easement Parcels (Temp)
-  Minimal Protection
-  Not Included in Easement Area
-  Easement Project - Phase #2

**RED property (parcel) lines are NOT final and should only be used for planning purposes.
1-April-2023**




Created by: ClearWater Conservancy
April 2023 - JAB
Data Sources: Centre County Planning & Community Development, USGS, USFWS, PA-DCNR, Western Pennsylvania Conservancy, Chesapeake Conservancy
Aerial Imagery: USDA / NAIP - 2019




CLEARWATER
conservancy

Egg Hill Properties
Spring Mills, Gregg Twp.
Centre County,
Pennsylvania

- Egg Hill Easement Project
- ClearWater Conservancy Projects
- Wetlands - NWI
- Natural Heritage Areas - PNDI
- State Forests - PA-DCNR-BOF
- Important Bird Areas
- Centre Municipal Boundaries


 0 1 2
 Miles
 1:48,000
 Created by: ClearWater Conservancy
 October 2022 - JAB
 Data Sources: Centre County Planning & Community
 Development, USGS, USFWS, PA-DCNR, PA-Audubon
 Western Pennsylvania Conservancy,
 Chesapeake Conservancy
 Aerial Imagery: USGS / ESRI

Chesapeake Bay WILD Priority 1: Conserve Fish and Wildlife Habitats

Sinking Creek Prairie Biological Diversity Area—PNHP



Side Oats Gamma Grass

Columbine
Dusky Wing

Silvery Blue

Long-fruited
Anemone



Mountain Ridges
Large Intact Forest Block
Young & Mature Forest



Streams
Wetlands
Riparian Forests



Cerulean Warbler

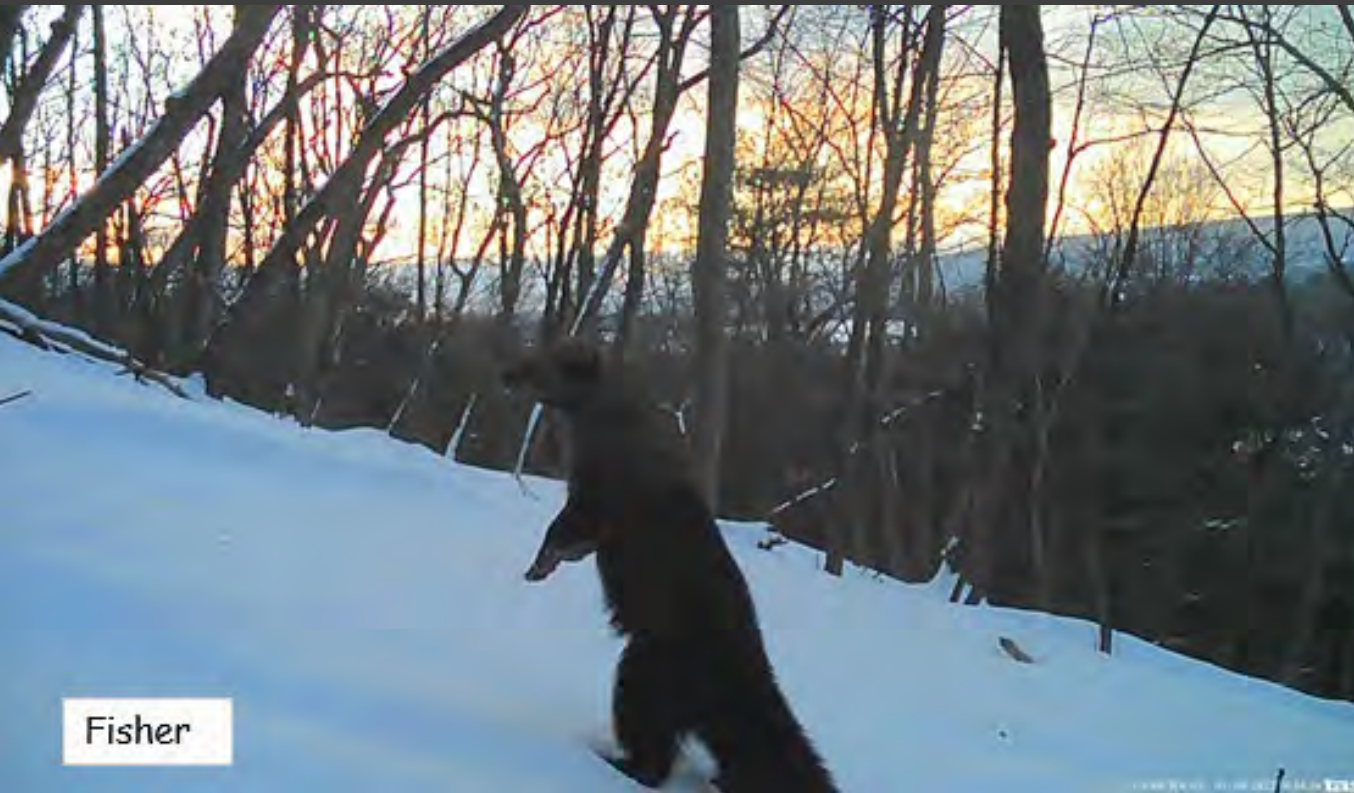


Wood Thrush

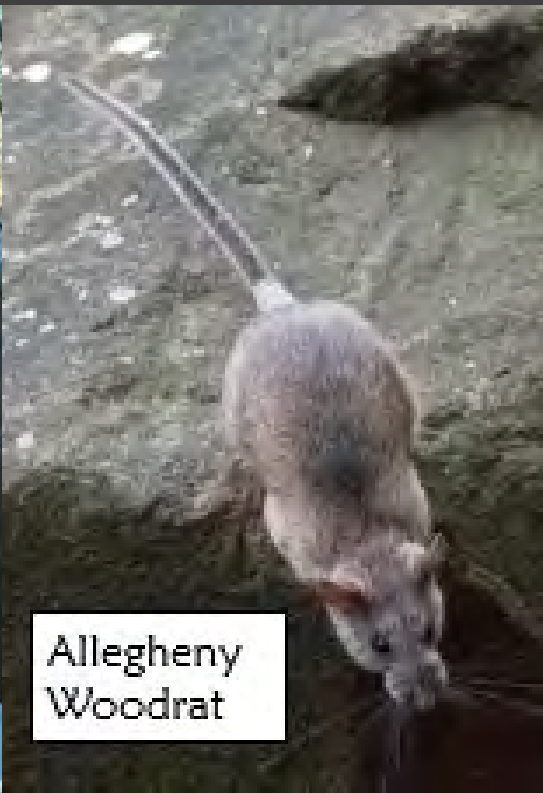


Ruffed Grouse

Habitat for Native Wildlife



Fisher



Allegheny Woodrat



Wild Turkey



Joel's Woods Forest Management Plan



Chesapeake Bay WILD Priority 2: Climate Change

Protect Climate Resilience (Varying Elevations, Microhabitats, Climate Refugia)

Improve Forest Management



Chesapeake Bay WILD

Priority 3: Community Partnership

Education & Outreach
Civic Engagement

Forest Stewardship Workshops
Community Planning (Rail Trail
Development)



Chesapeake Bay WILD

Priority 4: Public Access

Recreational Opportunities
Equitable Access to Nature



Access to Water & Public Fishing
Community Rail Trail



Chesapeake Bay WILD

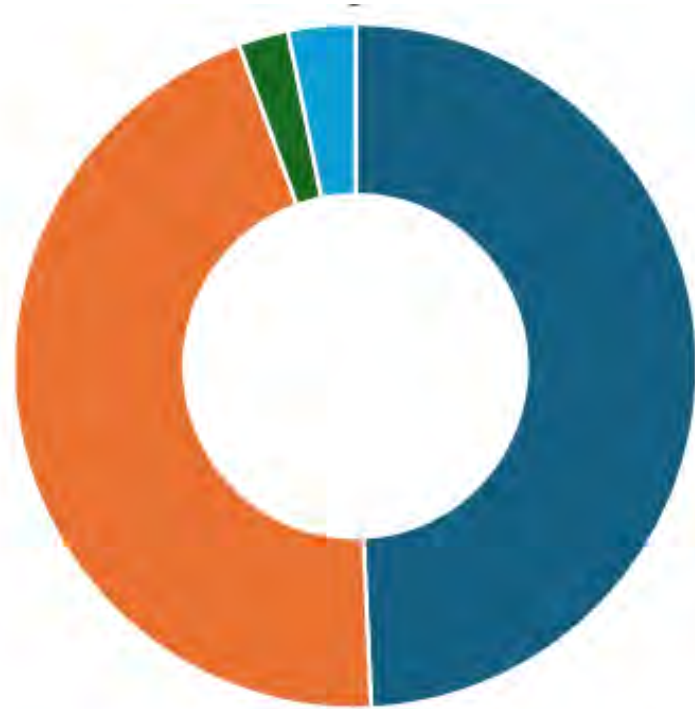
Priority 5: Water Quality



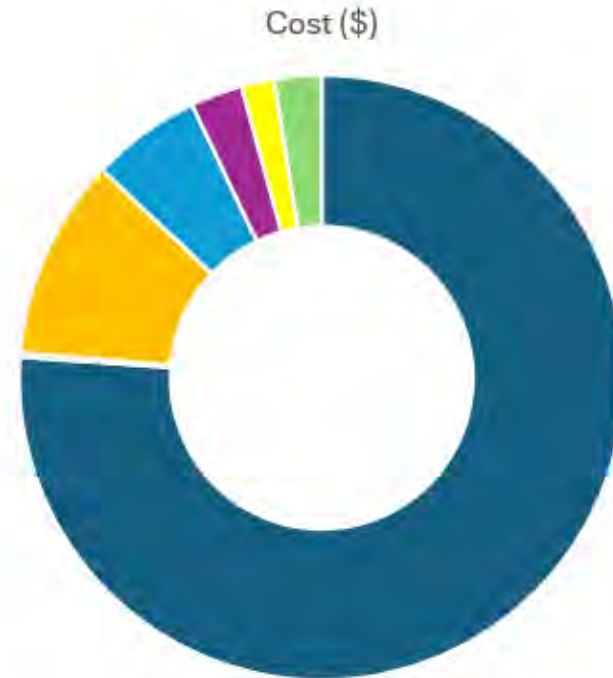
Sinking Creek
Riparian Forests
Wetlands

Project Funding

Project Costs (Budgeted)



■ WILD ■ DCNR ■ FPW ■ LO



■ Acquisition ■ GIS ■ Due Diligance
■ Endowments ■ Personnel ■ Indirect/Admin
■ Forest Stewardship

Challenges

- Funding Gaps
 - Staff time
 - Endowments & Stewardship
 - Project development
- Time and Timing
 - Between funders
 - Between expectations
 - Between due diligence activities and grant periods
- Federal Funding Requirements
 - Compliance
 - Appraisal Reviews
- Match



Thank you!

This project is made possible through grants from the National Fish and Wildlife Foundation, with support from the U.S. Fish and Wildlife Service, Pennsylvania DCNR Bureau of Recreation and Conservation's Keystone Recreation, Park and Conservation Fund, and the Foundation for Pennsylvania Watersheds.

